

ST ERMIN'S HOTEL



ST JAMES' PARK.
LONDON. S.W.

St. ERMIN'S HOTEL,

St. James' Park,
LONDON, S.W.



AND

VIEWS of
**Historical
Surroundings.**

ST. ERMIN'S HOTEL

St. James' Park,
LONDON, S.W.

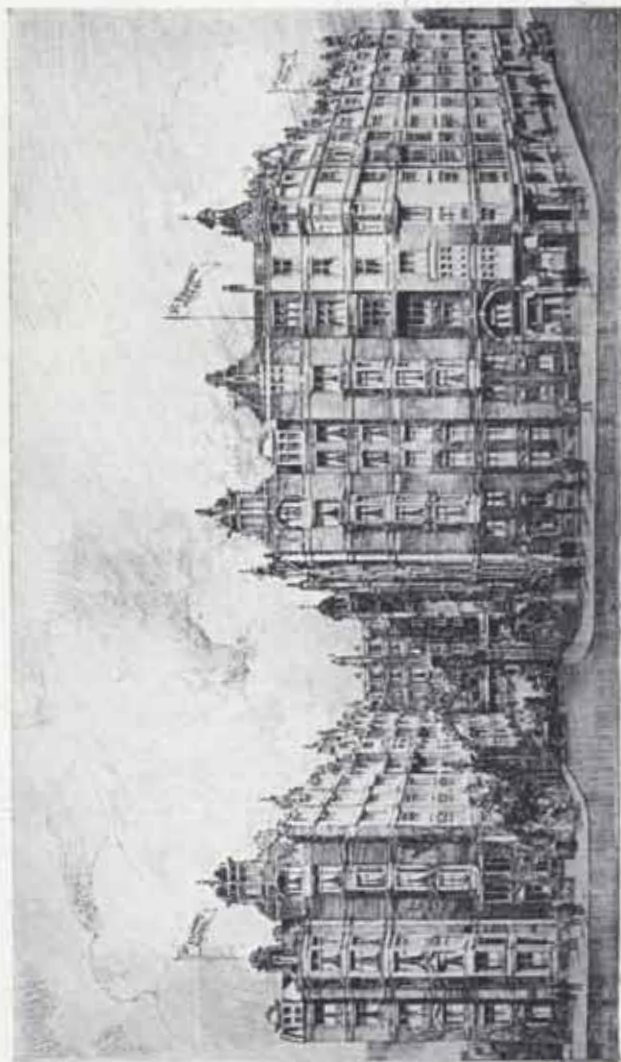
In the Heart of Everything.

SITUATED BETWEEN

**BUCKINGHAM PALACE,
WESTMINSTER ABBEY, and
THE HOUSES OF PARLIAMENT.**

TELEGRAMS—"ERMINITES, LONDON."

TELEPHONE NOS.—824, 825, 826, 827, WESTMINSTER.



ST. ERMIN'S HOTEL.

ST. ERMIN'S HOTEL.

THE ST. ERMIN'S is a magnificent Hotel of 600 rooms, situated between Buckingham Palace, Westminster Abbey, and the Houses of Parliament, and close to all Government Offices. It is within a few minutes' walk of Pall Mall, Piccadilly, Regent Street, and Bond Street, and is most accessible for all the principal Theatres.

St. James' Park District Railway Station is within one minute's walk, and affords easy communication with the City and the Law Courts.

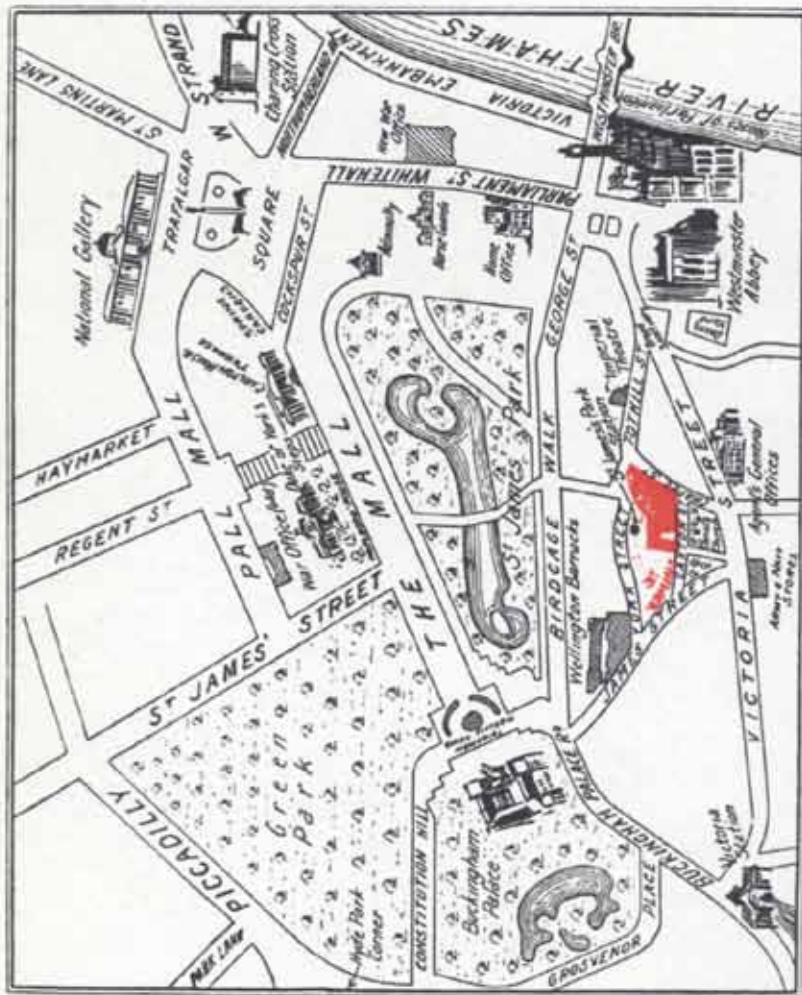
THE POSITION: The Hotel stands in view of (but about 100 yards back from) Victoria Street, and is entirely free from the noise of the traffic.

PUBLIC ROOMS: Besides a unique Lounge, there are large Drawing Rooms, Reading Rooms, Writing Rooms, and Smoking Rooms, all furnished with a view to convenience and comfort.

In addition to the above there is a Smoking Lounge, Private and Public Billiard Rooms, Ladies' and Gentlemen's Hairdressing Rooms.

TELEPHONE: Bells in all rooms throughout the Hotel have been superseded by Telephones, a new system having been installed, which visitors will find a great convenience, ensuring prompt attendance.

ORCHESTRA: A Band plays in the Lounge during the afternoon and evening, and in the Dining Room from 7 to 9 p.m.



MAP SHOWING ST. ERMIN'S CENTRAL POSITION.

TARIFF.

No Charge is made for Attendance, Baths and Light.

SINGLE BEDROOMS.

From 5/- per day.

DOUBLE BEDROOMS.

From 7/- per day.

BEDROOMS, WITH TWO BEDS.

From 12/- per day.

SUITES OF ROOMS.

Sitting Room and Single Bedroom.

From 15/- per day.

Sitting Room and Double Bedroom.

From 18/- per day.

SELF CONTAINED SUITES.

Sitting Room, Double and Single
Bedroom, and Bathroom.

From 25/- per day.

From 5 to 8 Rooms and Private Bathrooms
at proportionate rates.

No Charge is made for Attendance, Baths and Light.

TARIFF.

BREAKFAST.

Table d'Hote, 8 to 10.30 a.m. - - 3/-

LUNCHEON.

Table d'Hote, 12.30 to 2.30 p.m. - - 3/-

AFTERNOON TEA.

During Concert, 4.30 to 6 p.m. - - 1/-

DINNER.

(Served at separate tables) 6.30 to 8.30 p.m.

Recherché Dinner - 4/- and 6/-

*All Table d'Hote Meals are served at separate tables in
the Dining Rooms.*

*An extra charge will be made for Meals served in
Sitting or Bedrooms.*

*A Special Bill of Fare is prepared for guests not wishing
to partake of the above meals, or dining in their Suites.*

VISITORS' SERVANTS.

Bedrooms - - - from 3/- per day.

Board taken in Steward's
room - - - from 4/- per day.



DRAWING ROOM



PORTICO LOUNGE.

St. ERMIN'S HOTEL



St. James' Park,
LONDON, S.W.



HISTORICAL LONDON

Within 10 minutes' walk
of St. Ermin's Hotel.





BUCKINGHAM PALACE.



HOUSES OF PARLIAMENT.



FOREIGN OFFICE FROM ST. JAMES' PARK.



TRAFALGAR SQUARE.



NATIONAL GALLERY.



HORSE GUARDS.



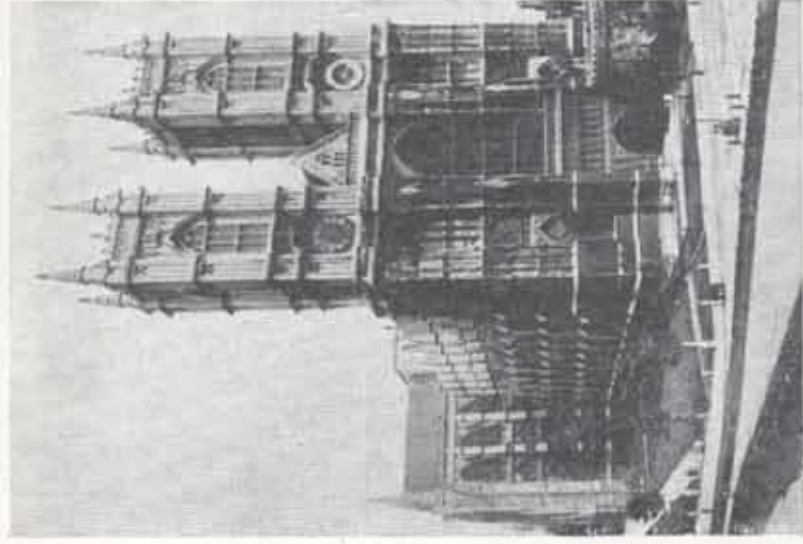
HYDE PARK CORNER.



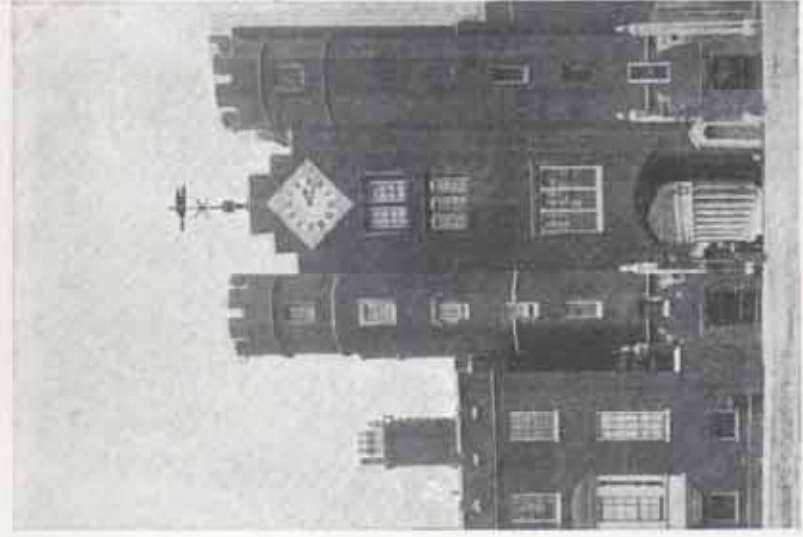
NEW ADMIRALTY BUILDINGS.



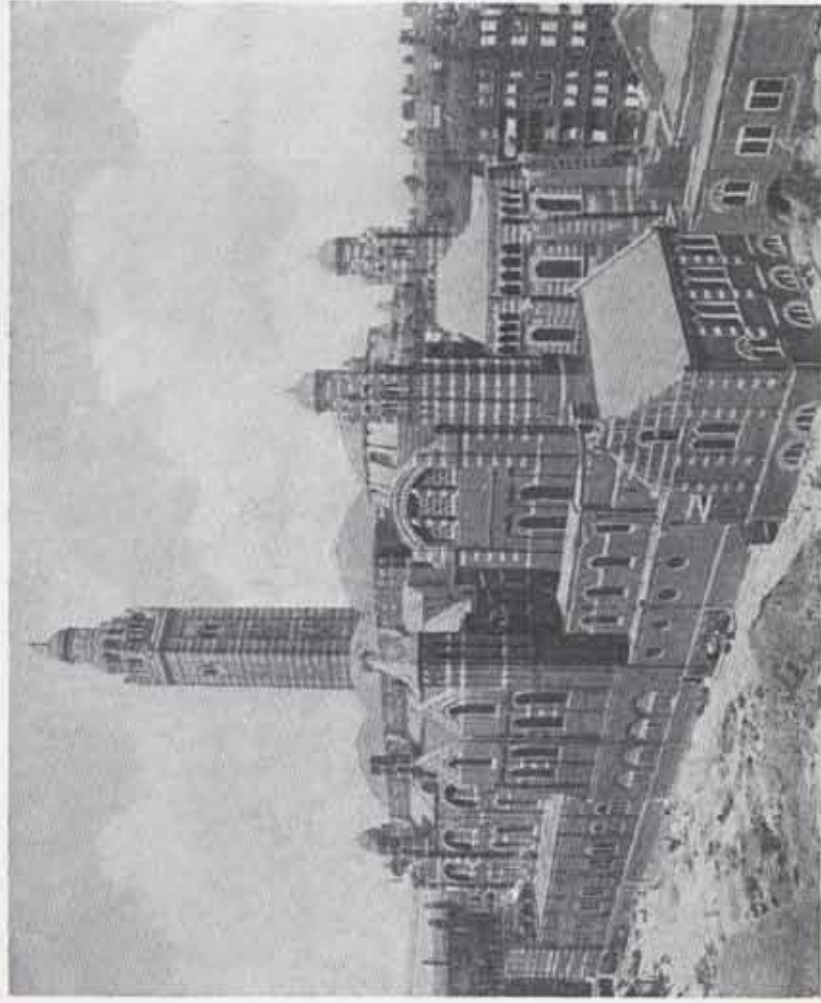
PARLIAMENT SQUARE AND "BIG BEN."



WESTMINSTER ABBEY.



ST. JAMES' PALACE.



WESTMINSTER CATHEDRAL.

Gale & Polden, Ltd., 2, Amen Corner, E.C. 33,772.

5
-5